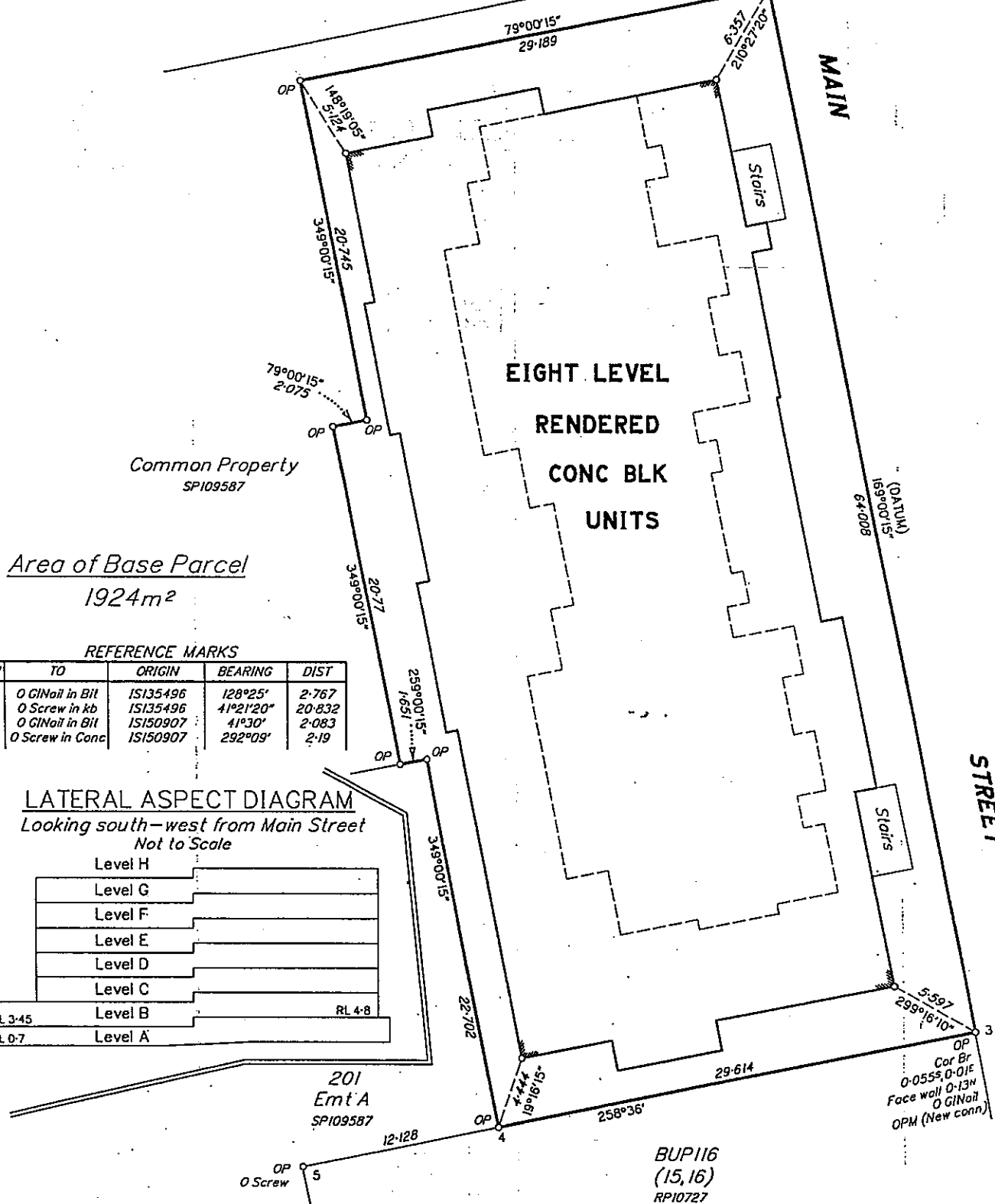


PERMANENT MARKS

PM	ORIGIN	BEARING	DIST	NO
2-OPM	IS150907	257°22'20"	109.393	116751
3-OPM	IS150907	237°19'25"	119.208	116883

(New conn) RP48183
(New conn)

OP
C. face SFP
0.29m, 0.03e
O Screw
O GINail



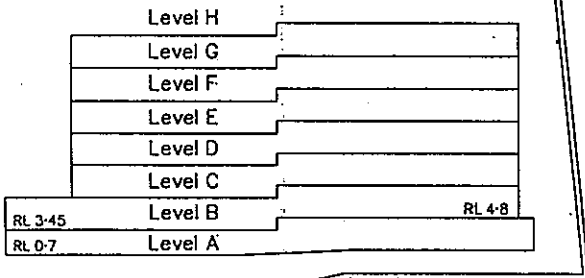
Area of Base Parcel
1924m²

REFERENCE MARKS

STN	TO	ORIGIN	BEARING	DIST
1	O GINail in Bit	IS135496	128°25'	2.767
1	O Screw in kb	IS135496	41°21'20"	20.832
3	O GINail in Bit	IS150907	41°30'	2.083
5	O Screw in Conc	IS150907	292°09'	2.19

LATERAL ASPECT DIAGRAM

Looking south-west from Main Street
Not to Scale



TABWEST PTY LTD ACN 014 995 691
hereby certify that the company has surveyed the land
comprised in this plan by
Leonard James HEWITT (Licensed Surveyor) and by
Gordon Keith FRASER (Surveying Graduate)
for whose work the Company accepts responsibility, that
the plan is accurate, that the said survey was
performed in accordance with the Surveyors Act 1977
and the Surveyors Regulation 1992, and that the said
survey was completed on 21/3/2000



2 0 4 8 12 16 20 24 28 32 36m

Plan of Lots 1-44 & Common Property

Cancelling Lot 200 on SPI09587

PARISH: SOUTH BRISBANE COUNTY: Stanley

Meridian: SPI09587

F/N's: No

Scale: 1:250

Format: BUILDING



SP109588

Plan Status:

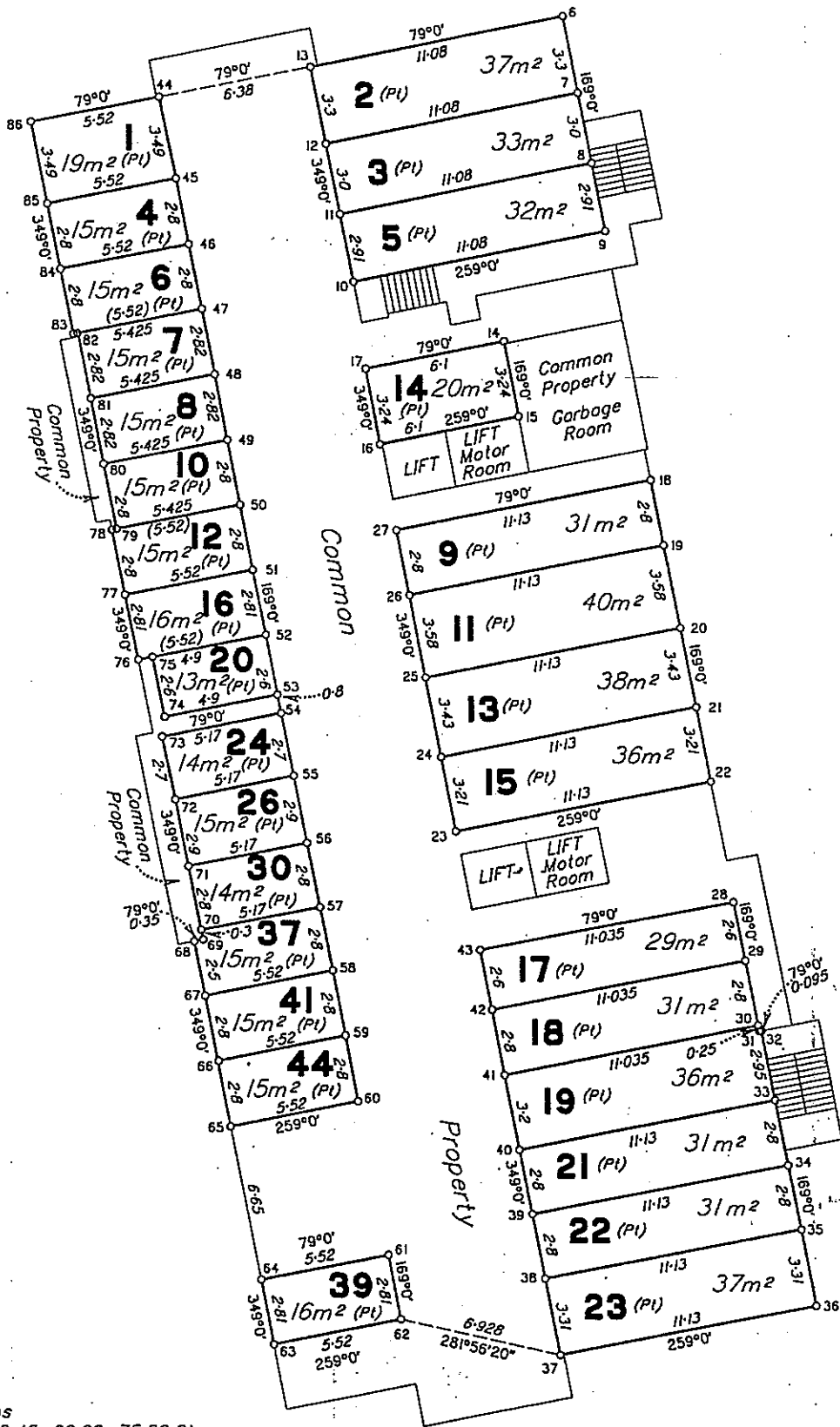
STREET

MAIN



LB 99619

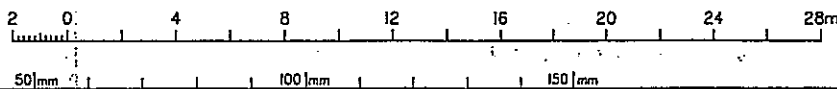
LJ HEWITT & CO 95-089



- Screw in conc at stations
11, 12, 13, 17, 23-30, 37-43, 45-66, 69-75, 80, 81
- Intersection of Conc Walls at stations
6, 9, 15, 32, 36, 68, 86
- Screw in Face Conc Wall 0-0955W at stations
7, 8, 18, 19, 20, 21, 22, 33, 34, 35
- Screw in Face Conc Wall 0-0955NE at stations
67, 76, 77, 78, 83-85
- W Cor Blk Wall 0-0955NW at stations 10, 16, 31
- W Cor Blk Wall 0-0955SW at station 14
- E Cor Blk Wall 0-0955SE at station 44
- Screw in NE Face Wall at stns 79, 82

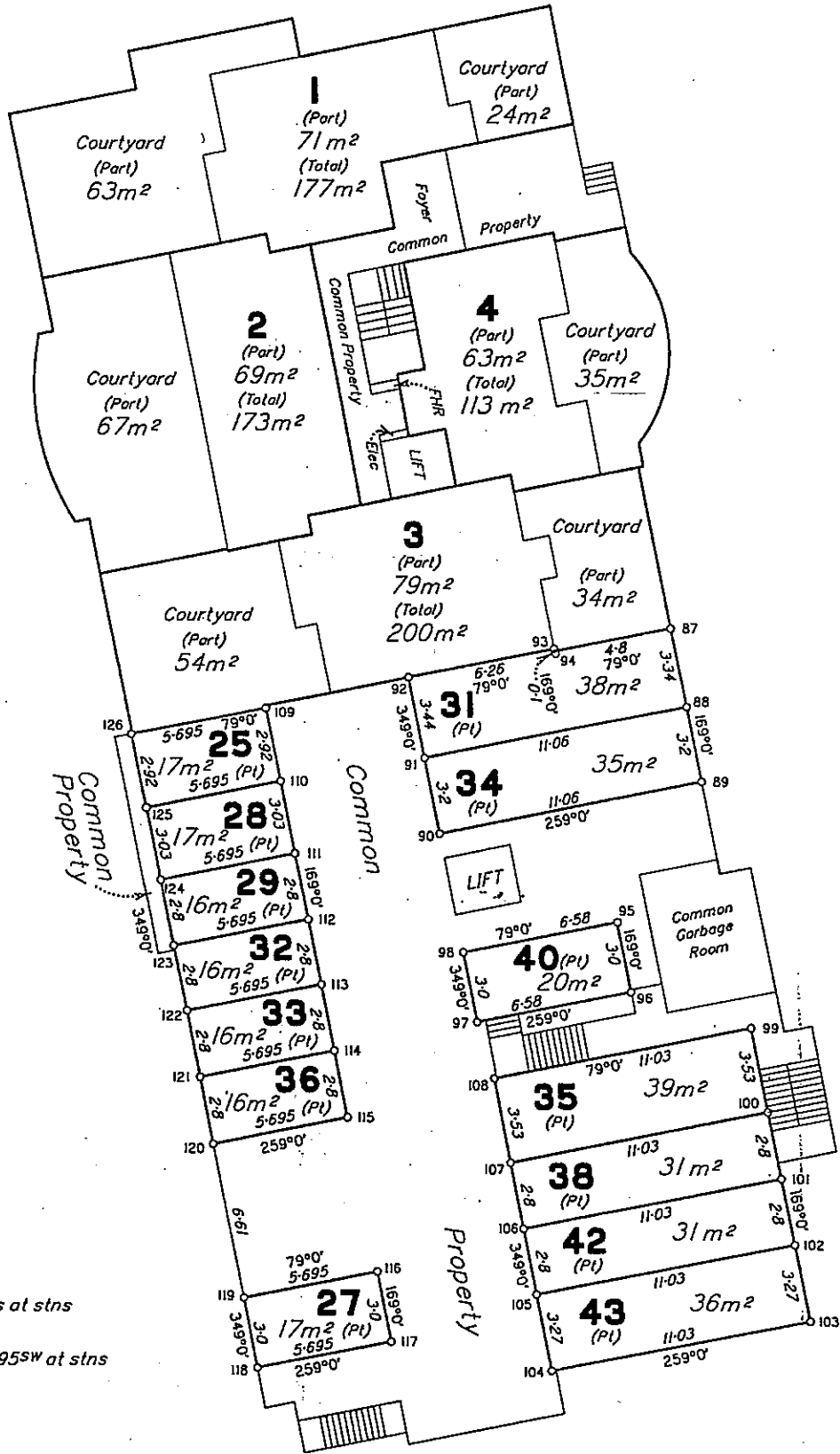
LEVEL A

Scale 1: 200



State copyright reserved.

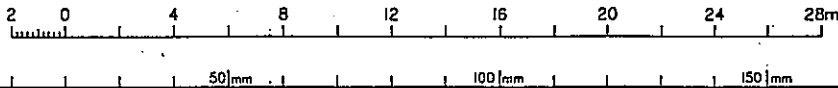
Insert Plan Number SPI09588



- Intersection of Conc Blk Walls at stns 87, 93, 94, 99, 103, 126
- Screw in face Conc Blk Wall 0-095^{SW} at stns 88, 89, 100-102
- Screw in conc at stations 90, 91, 98, 105-107, 110-117
- Centre of Conc Column at stn 95
- W Cor Blk Wall at stn 97
- W Cor Blk Wall 0-095^{NW} at stns 96, 104
- S Cor Blk Wall 0-095^{SE} at stn 108
- Screw in face Conc Blk Wall 0-2^{SE} at stn 92
- Screw in face Conc Blk Wall 0-095^{NE} at stns 118-125
- Screw in face Conc Blk Wall 0-095^{SE} at stn 109

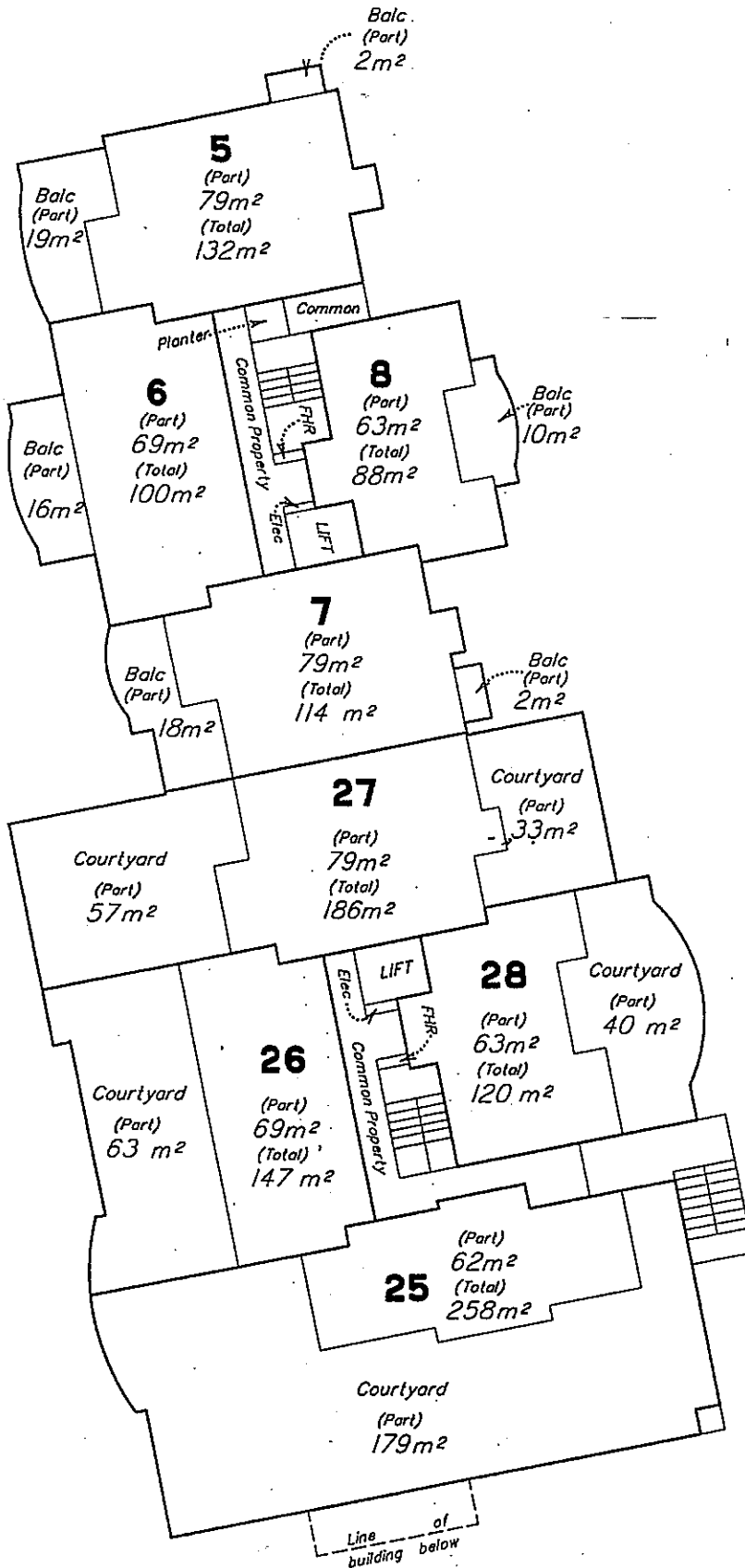
LEVEL B

Scale 1:200



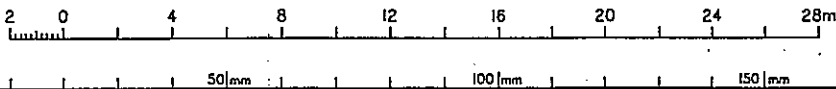
State copyright reserved.

Insert Plan Number SPI09588



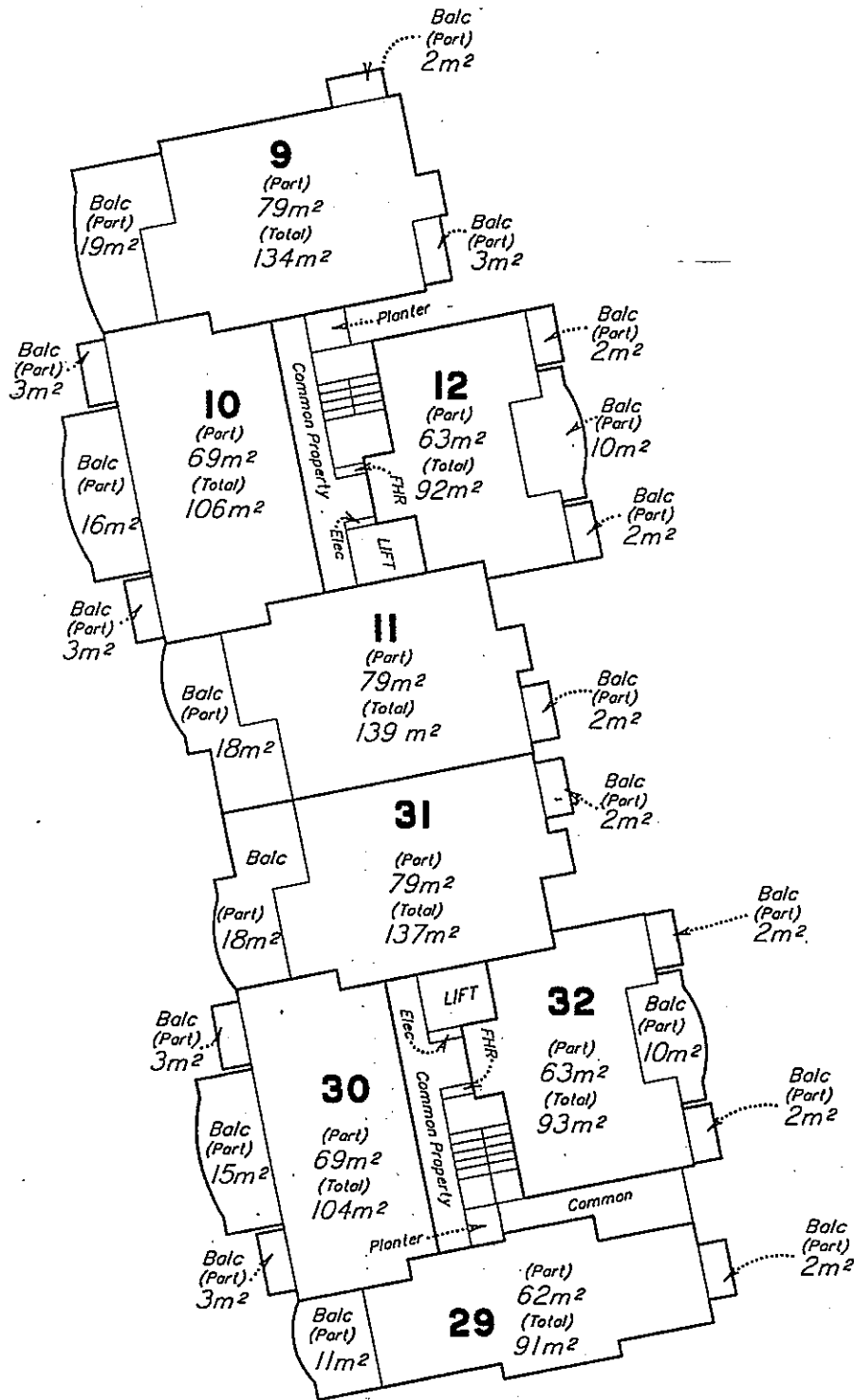
LEVEL C

Scale 1:200



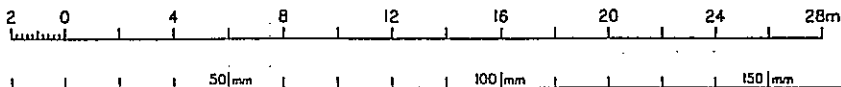
State copyright reserved.

Insert Plan Number SPI09588



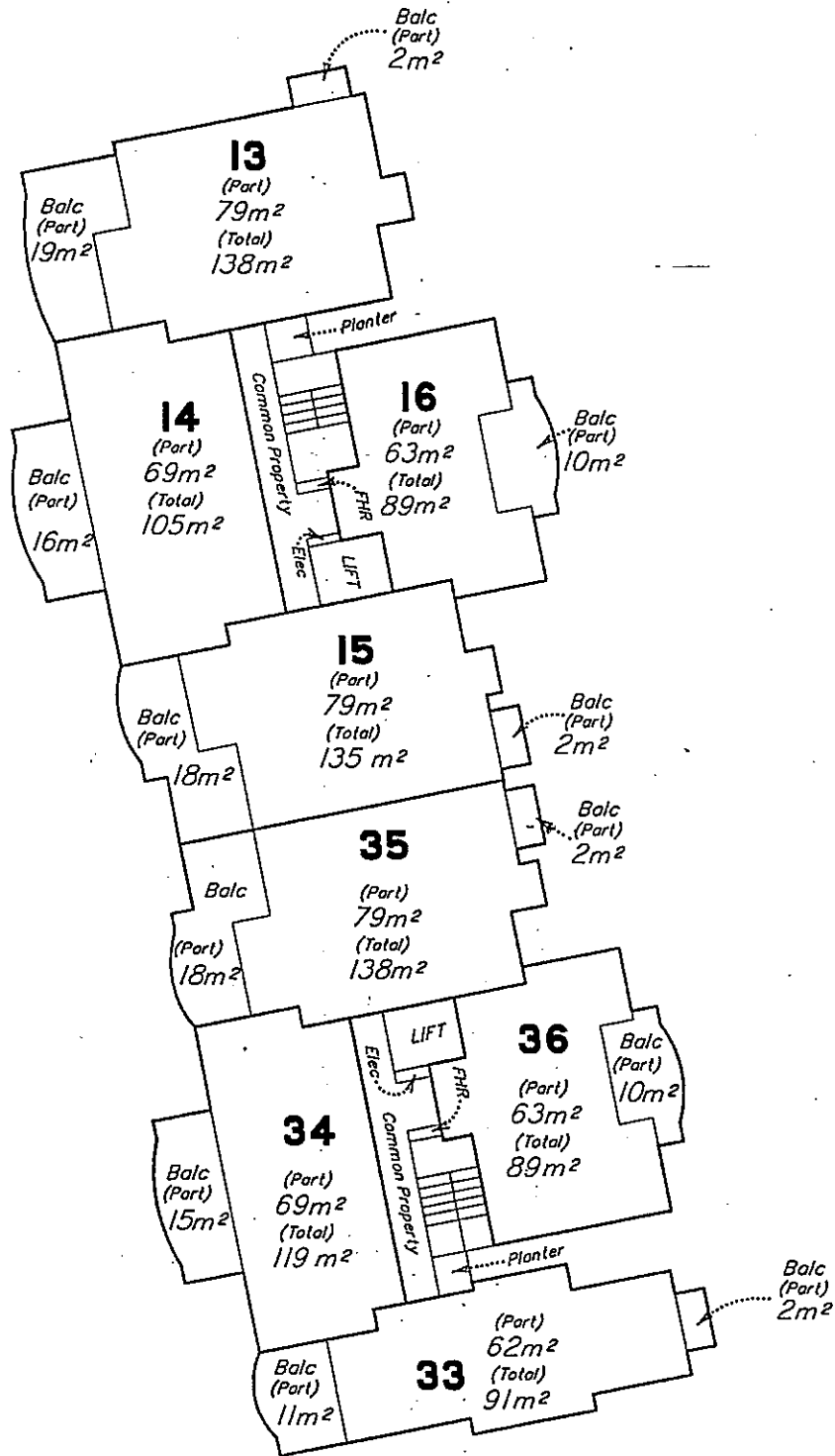
LEVEL D

Scale 1:200



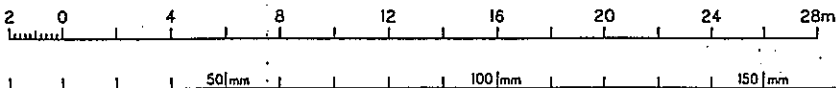
State copyright reserved.

Insert Plan Number SPI09588



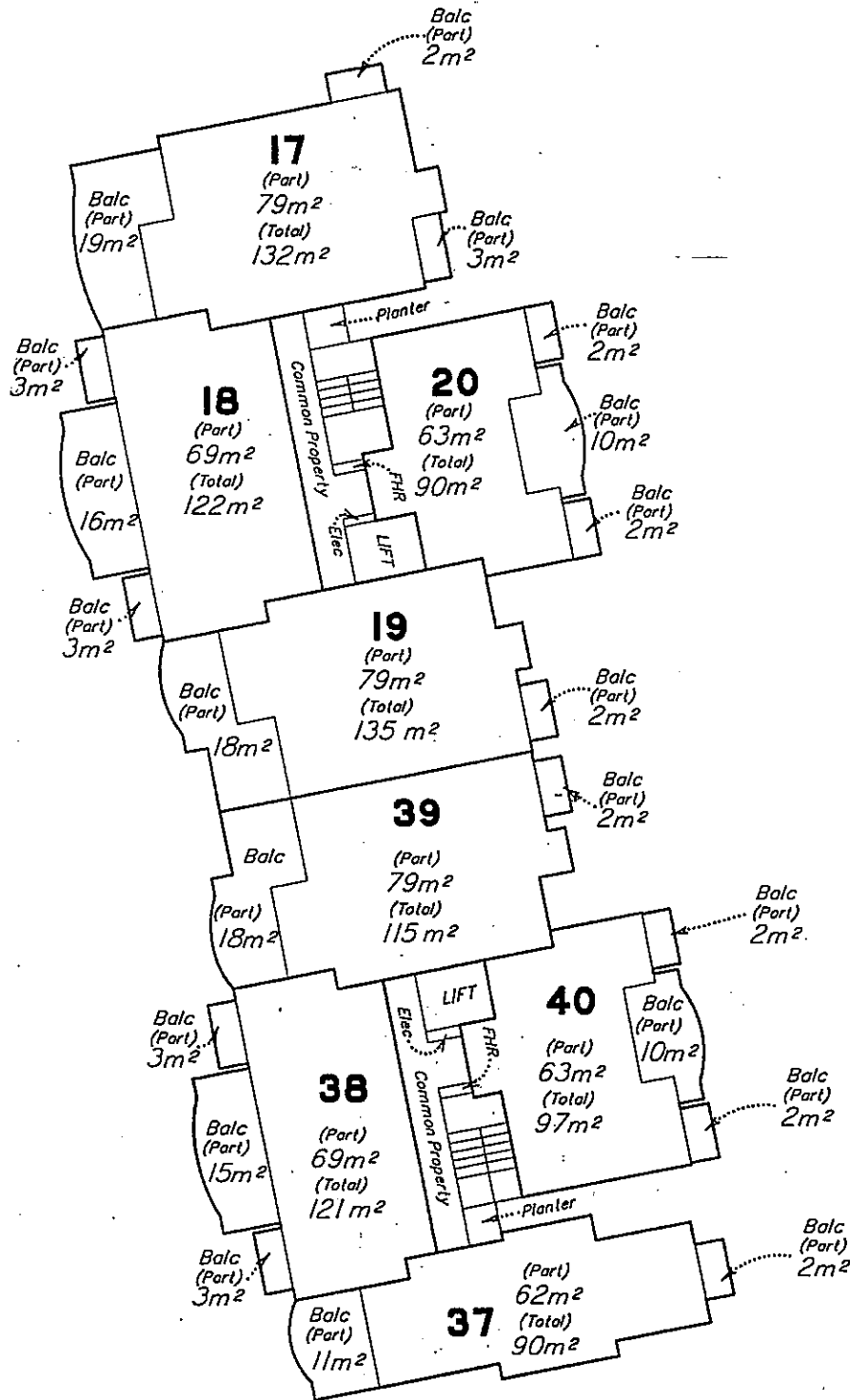
LEVEL E

Scale 1:200



State copyright reserved.

Insert Plan Number SPI09588



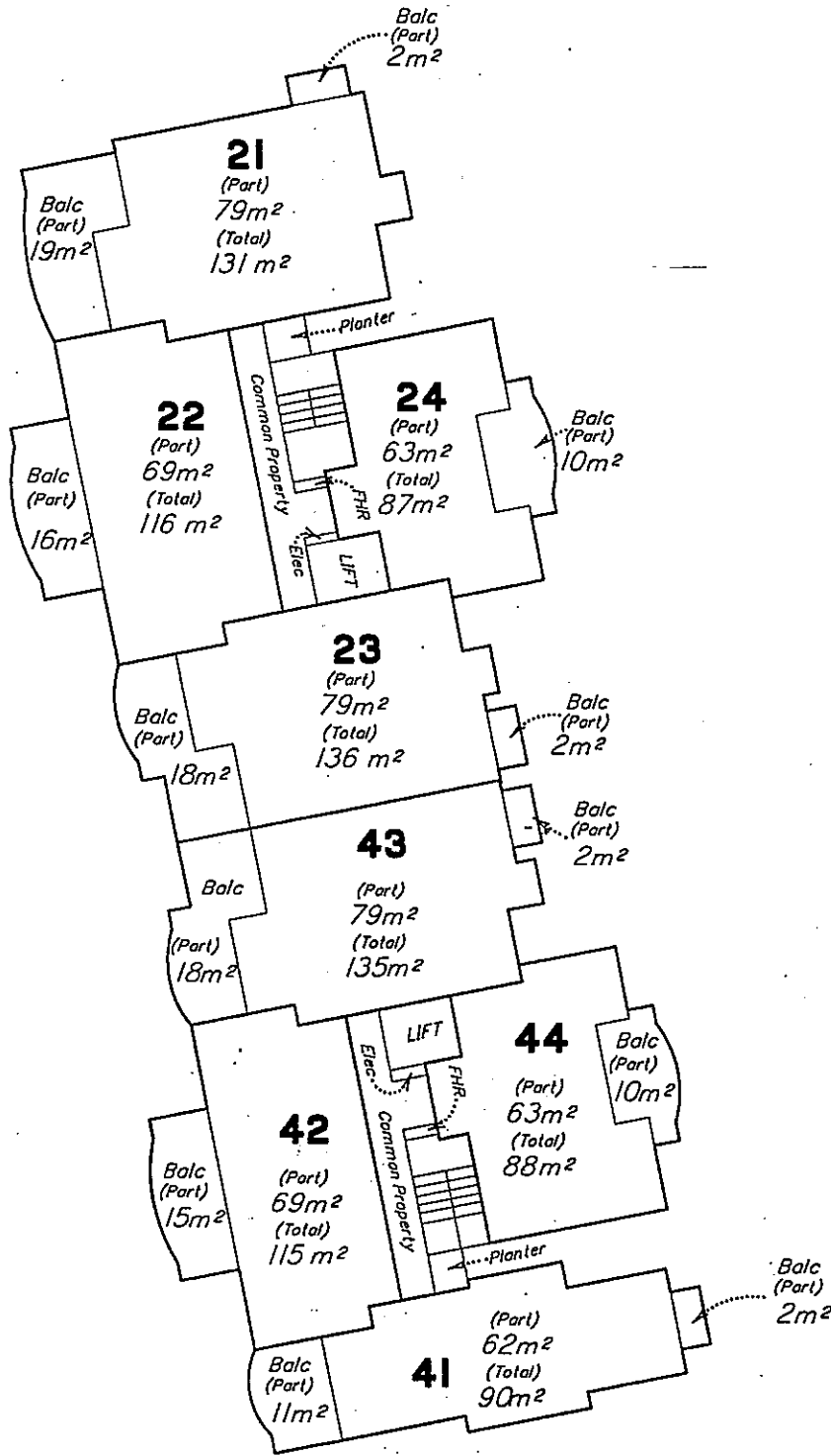
LEVEL F

Scale 1:200



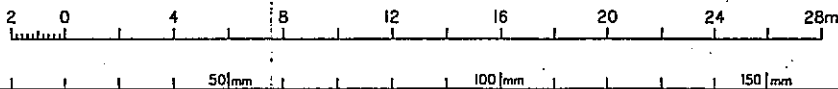
State copyright reserved.

Insert Plan Number SP.109588



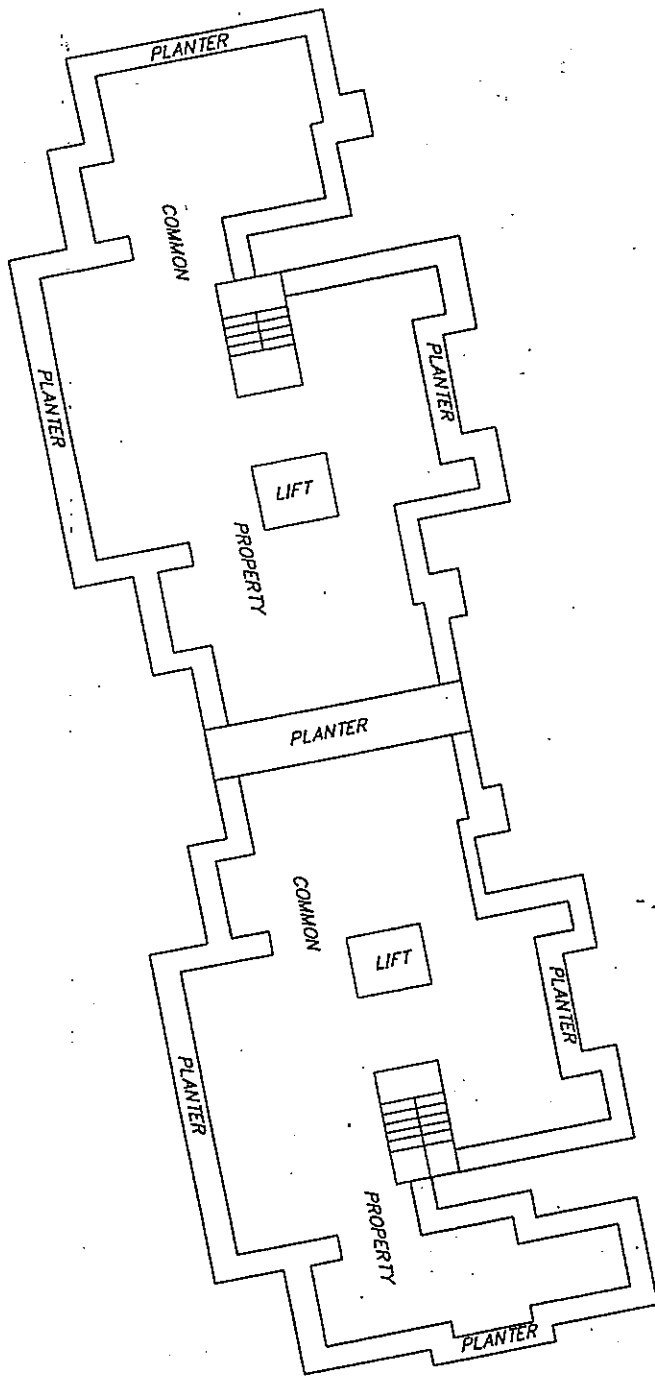
LEVEL G

Scale 1: 200



State copyright reserved.

Insert Plan Number SPI09588



LEVEL H

Scale 1:200



State copyright reserved.

Insert
Plan
Number **SP109588**